

IEP Planning Form

This form provides a guideline for your input at the IEP meeting and can be used as a basis for discussion. Please share a copy with your child's special education teacher prior to the meeting.

Child's Name: _____

Date: _____

My child's strengths, interests and preferences:

My child needs the most help with:

The most important goal(s) for my child for next year:

Effective strategies or rewards for my child:

Special considerations such as transition, social or behavior issues:

Questions or concerns:

Other information the school should know:

FEP Coordinators

Family & Educator Partnership

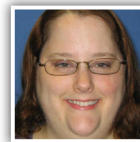
Contact Us



Sara Mohr
Family Educator
Partner
319-399-6470
smohr@gwaea.org



Jen Cira
Family Educator
Partner
319-399-6719
jcira-debban@gwaea.org



Elizabeth Gants
Administrative
Assistant
319-399-6849
egants@gwaea.org



Planning for Your Child's IEP Meeting

What is an IEP?

The Individualized Education Program (IEP) is a legal document that is designed to meet your child's individual learning needs. The IEP is created through a team effort and is reviewed every year.

Before the Meeting

Build an effective partnership with someone on the IEP team, such as the teacher, principal or Area Education Agency (AEA) staff member.

Write down the things you want to talk about at the meeting. Be prepared to:

- Discuss your child's strengths, interests and preferences
- Identify your concerns about your child's education
- Identify special considerations such as transition, behavior or communication
- Establish priorities to be considered for goal areas

Send private evaluation reports (i.e. physician, psychologist, etc.) to the IEP team ahead of time so they can be familiar with the information before the meeting.

You may invite someone to attend the meeting with you to provide support. It may be a spouse, friend, Family & Educator Partnership (FEP) Coordinator, or someone who has special knowledge of your child. Let the school know who will be coming.



During the Meeting

You are an important part of the IEP team. You know your child best and have valuable information to share with the team. These things include strengths, talents, interests and needs.

Other team members include:

- General education teacher(s)
- Special education teacher
- Representative of the school who can commit resources (such as a principal)
- AEA staff members may include Special Education Consultant, School Social Worker, School Psychologist, Speech Language Pathologist, Occupational Therapist (OT), Physical Therapist (PT), and Audiologist.
- Your child — it's never too early to include them in the process.
- Private provider or agency hired by the family
- Representatives from transition service agencies, if applicable
- Others you may have invited

Goals will be written based on your child's educational needs. They may address other concerns such as language development, behavior or social skills.

Be involved and ask questions for clarification.

The IEP team decides how the student will participate in the general education setting and will identify how much time will be spent in each setting. This is referred to as LRE or Least Restrictive Environment.

The IEP will be implemented immediately or on a date specified in the IEP.

The IEP must include a description of how progress will be measured and when reports will be provided, usually with report cards.

You will receive a copy of the IEP at the meeting. If you do not receive progress reports, contact your child's special education teacher.

After the Meeting

Talk with the teacher and staff responsible for the IEP goals. Ask what you can do at home to practice the skills and strategies being taught at school.

Review progress reports as you receive them.

The IEP is reviewed at least once a year. However, if you or the teacher feel that your child isn't making progress or has achieved the goals sooner than expected, a meeting can be scheduled to revise the IEP by sending a written request to the school.

Whenever an IEP team recommends a change in service or placement, a prior written notice (PWN) will be given to you. This gives you time to consider the recommendations.

Contact your FEP Coordinator for support before, during or after the IEP meeting.

